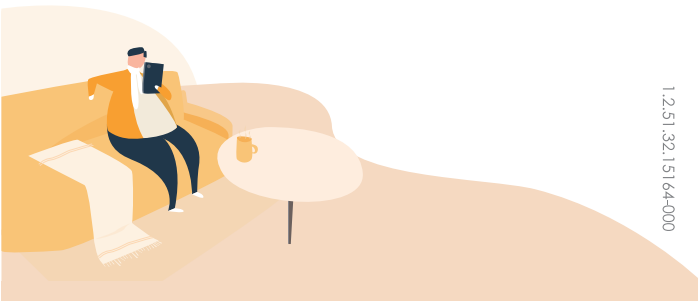




Quick Start Guide

Door Contact

Version 1.0.0



1.2.51.32.15164-000

Packing List



Door Contact *1



QSG*1



CR123A Battery*1



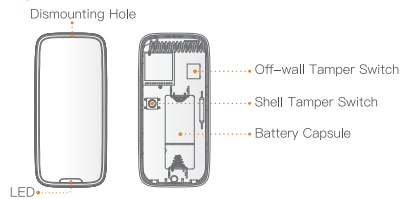
Mounting Foam*1



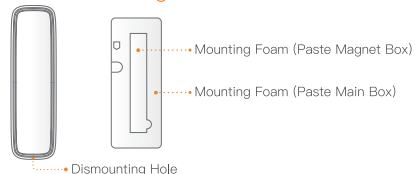
Screw Package*1

Introduction

Main Box



Magnet Box and Mounting Foam



LED Indicator Status	Device Status
Red light fast flashes	Booted up or pairing with Alarm Station
Red light is on for 2s, and then turns off	Pairing succeeded
Red light slowly flashes for three times, and then turns off	Pairing failed

About the Guide

- This quick start guide is for reference only. Minor difference might be found in user interface.
- All the design and software here are subject to change without prior written notice.
- All trademarks and registered trademarks mentioned are the properties of their respective owners.
- Please visit our website or contact your local service engineer for more information.
- If there is any uncertainty or controversy, please refer to our final explanation.

Start to Use

Imou App

If Imou app has added the Alarm Station, add the detector according to app prompts.

Note:

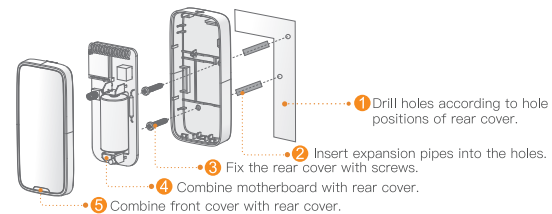
If the detector has paired with another Alarm Station, you can undo previous pairing by quickly clicking tamper switch for 5 times to clear the existing pairing configuration.

Installation

Caution:

- Stick magnet box tightly to the side pointed by triangular arrow on the rear of main box.
- We suggest pasting the main box on door/window frame, and magnet box on door/window.

Install main box as follows:



Install magnet box as follows:

